

Simology TM

Critical Moulage Kits

Complex Clinical Wound Range Brochure

MDT Global Solutions are proud to offer the new Simology™ range of premium quality flat mould wounds designed to enhance medical simulation training. Our pre-made wounds take minutes to apply and create hyper-realistic simulation. They are designed for single application but can remain on the manikin for several training sessions.

Wounds are soft and lifelike made of encapsulated silicone, which has been softened with deadener to produce a lifelike skin feeling.

Wounds are available in one of four skin tones:



Dark

Warm

Medium

Pale

In addition to the skin tone, all wounds contain flocking to enhance a lifelike skin appearance.



All wounds are supplied with the wound interiors pre-painted



Wound Application Kit – Part No. SW-AK1

All the items that you need to apply around 50 wound pieces that are ordered with correct skin tone for use. Note- will require local purchase of acetone in addition to the kit contents.

Contents:

- ◆ 2oz Silicone Glue and 2oz Thinners
- ◆ 250ml Glue Remover
- ◆ 500g Arterial Blood
- ◆ 2 x metal reusable shot glasses
- ◆ 5 detail brushes
- ◆ 1 Application Tool
- ◆ Cotton buds



Bruising Application Kit – Part No. SW-BK1

All the items that you need to apply multiple bruises and traumatic skin tone effects. Local purchased IPA Alcohol will need to be added to the activator spray

Contents:

- ◆ Alcohol Colour Palette
- ◆ Alcohol Palette activator spray(empty)
- ◆ Professional Stipple brush



*examples of effects created:



Skin Tone Blending Application Kit –

Part No. SW-STK1

All the items that you need to perfectly match the skin tone of the wound to the manikin for TV / Film level effects. Local purchased IPA Alcohol will need to be added to the activator spray



Contents:

- ◆ Alcohol Colour Palette
- ◆ Alcohol Palette activator spray(empty)
- ◆ Professional Stipple brush

Blood lines – Part No. SW-BL1

Soft, flexible quality silicone pipe that can be used under certain flat moulds to produce actively bleeding wounds



Contents:

- ◆ 1m Reusable Silicone Pipe
- ◆ Barbed tubing connector on one end

*images for illustration purposes

Simple Application Guide

If you are new to encapsulated silicone flat moulds here is a simple guide to application using the items from our application kit above:



Prior to any application clean the manikin skin if dirty. Use IPA Alcohol for this.

Place flat mould piece in the desired location and mark edges of the piece so that the size is identifiable when the piece is removed.



Do not use too much acetone and stay to the edge of the piece. Once the flashing is removed, revisit the edge if required with a little more acetone on a brush to produce finished smooth edges. **DO NOT** use excessive amounts of acetone on the manikin skin.



Now apply glue to the manikin skin and the piece using a cotton bud. For easier application mix glue: thinners 1:1 in one of the shot glasses. Allow the glue to dry. A hand fan can be used to speed up this process if required. Larger pieces may need to be glued in stages.



Applied piece should then have fine edges. If there are tacky areas of glue use a small amount of talc to dry the area. Advanced users may now further blend the piece to the skin by using fine washes from an alcohol palette to improve on the skin tone of the piece if required, using the skin tone application blending kit.



Once the glue is dry apply the piece. Start with pressure in the middle and stretch it out gently towards the edges so that there are no creases in the piece. Once you are satisfied with location apply pressure to glue down. Use the application tool to assist with this.



Finish the effect by using blood as required on the piece. If the blood beads over the piece, try using a little washing up liquid mixed into your blood to stop this occurring and improve on the final look of the finished application.



Once the piece is glued down use some acetone in the metal shot glass on one of the brushes to dissolve the edges of the piece next to the silicone flashing ring. Gently smoothing outward will dissolve the encapsulate material and leave a fine edge.

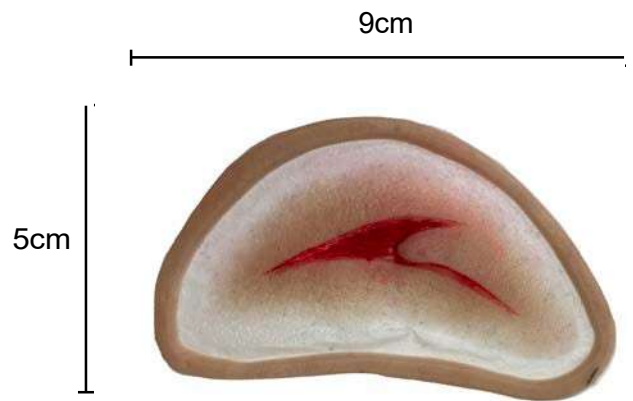


To remove, wipe off any blood effects with a baby wipe. Remove any alcohol palette colours with IPA Alcohol. Then peel off the piece and remove any residual glue on the manikin using the bespoke remover included in the kit. Dry and then finish with a light dusting of talc.

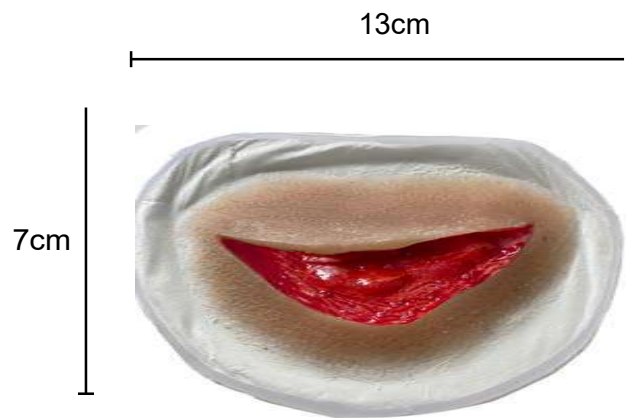
Bladed wounds



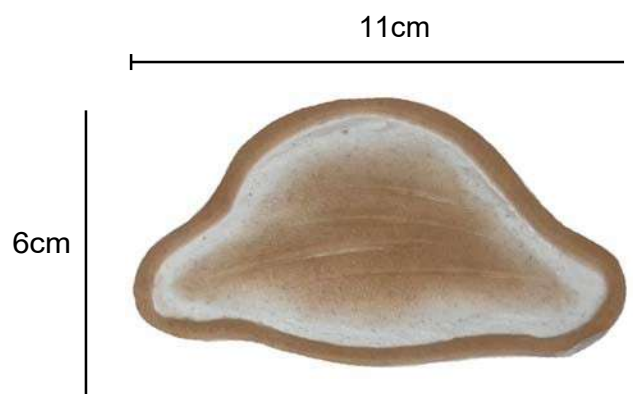
Wound SW1:
1.5 inch wound with skin flap



Wound SW2:
3 inch curved laceration with large flap

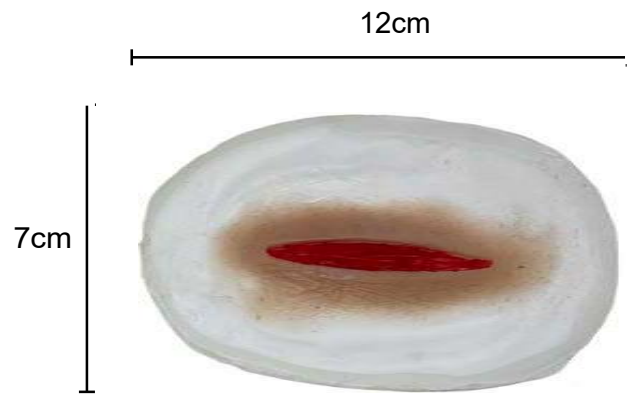


Wound SW3:
2 inch fine-blade deliberate self harm wounds

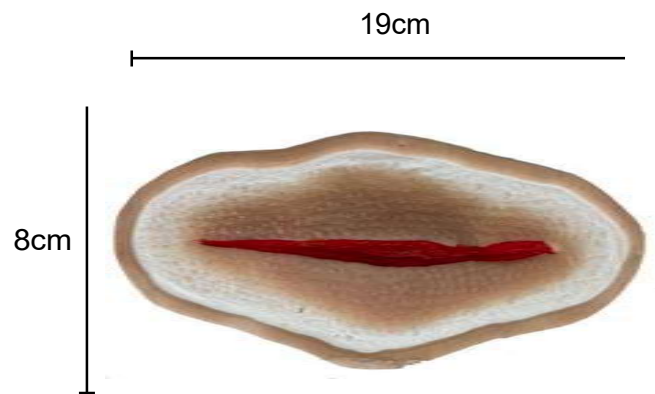




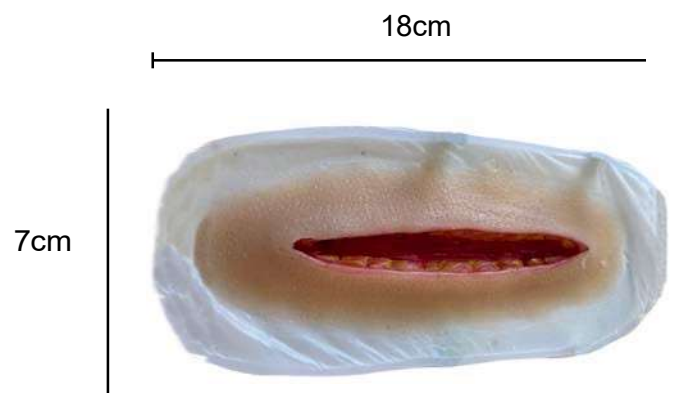
Wound SW4:
Simple 3 inch laceration



Wound SW5:
Simple 6 inch laceration
Actively bleeds with addition of blood line



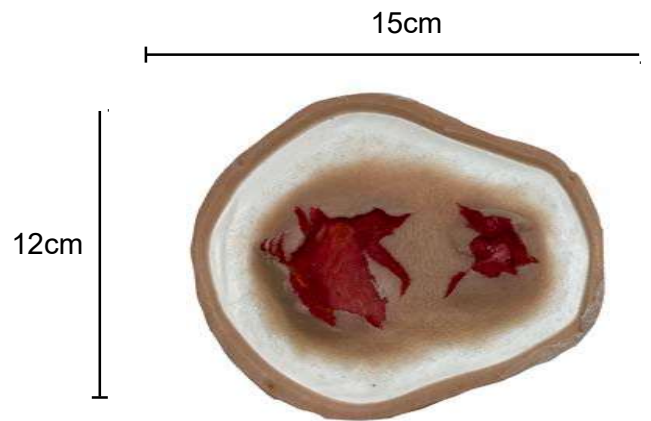
Wound SW6:
Machete wound to limb
Actively bleeds with addition of blood line



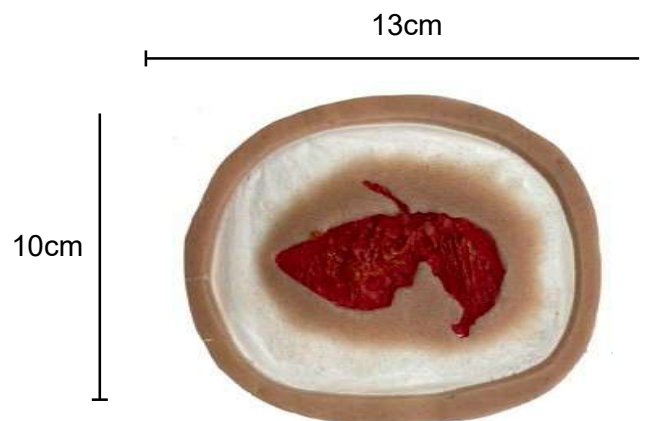
Traumatic Wounds



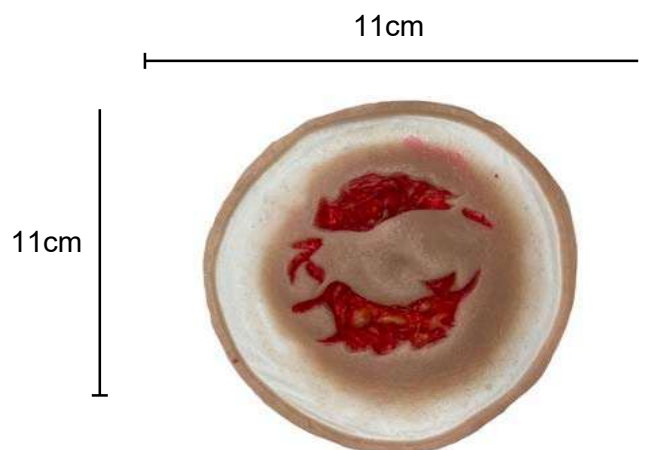
Wound SW7:
large 5 inch generic tissue wound
Actively bleeds with addition of blood line



Wound SW8:
3 inch generic tissue wound / Gun shot exit
Actively bleeds with addition of blood line

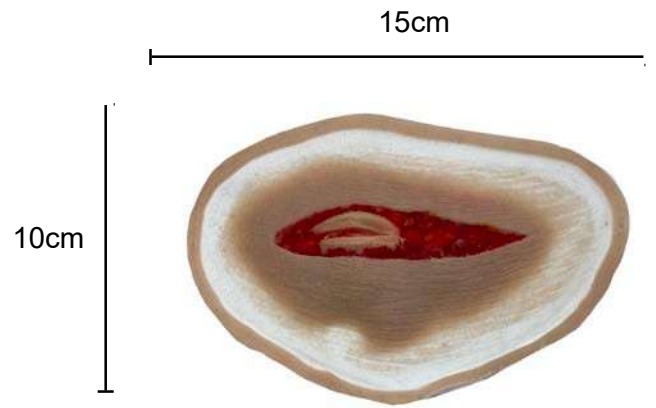


Wound SW9:
Animal bite wound

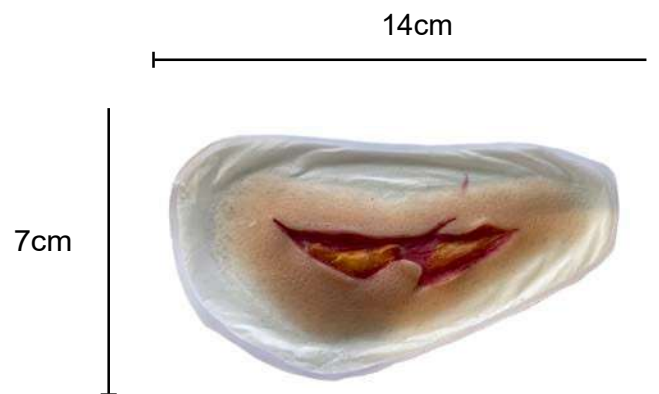




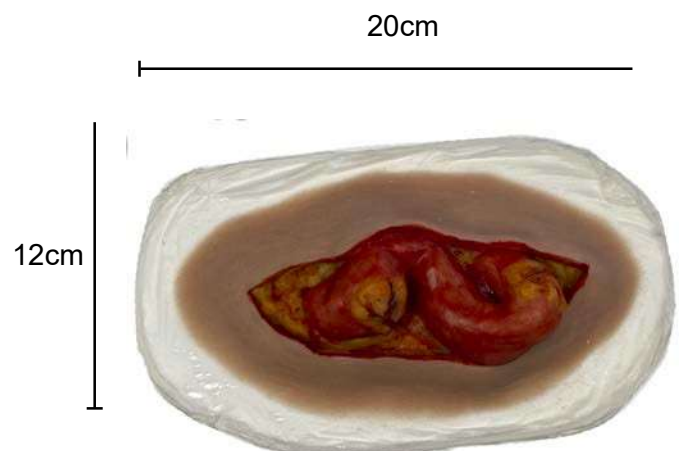
Wound SW10:
Open throat with visible larynx



Wound LSW11:
3 inch jagged traumatic wound

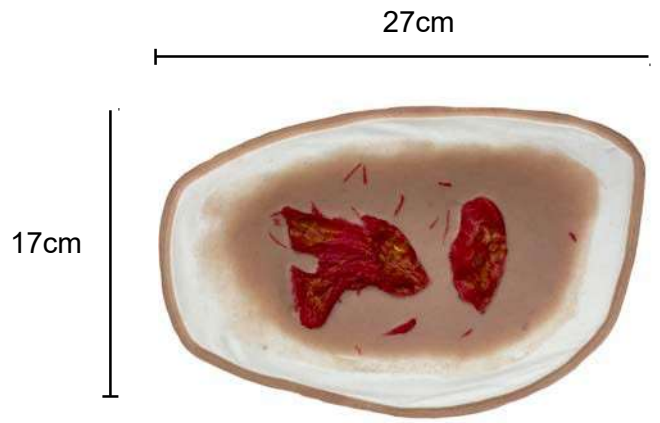


Wound SW12:
Eviscerated Abdomen





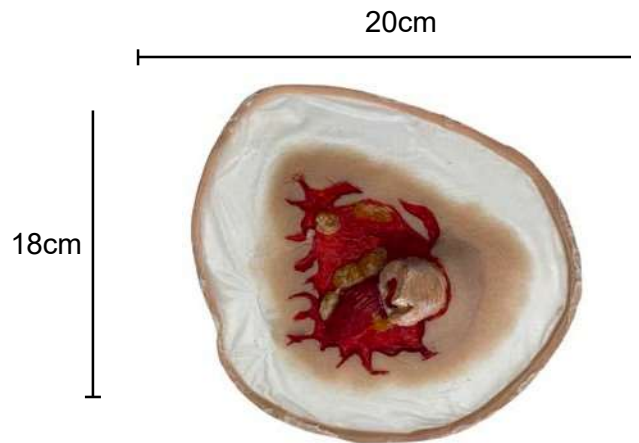
Wound SW13:
12 inch large trauma wound
Actively bleeds with addition of blood line



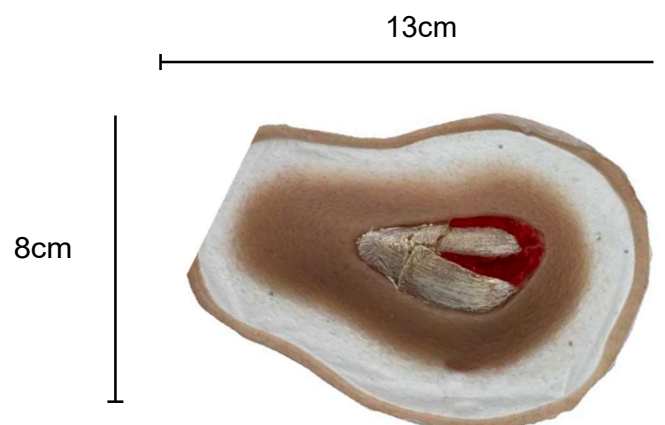
Fractures



Wound SW14:
Open femur fracture
Actively bleeds with addition of blood line

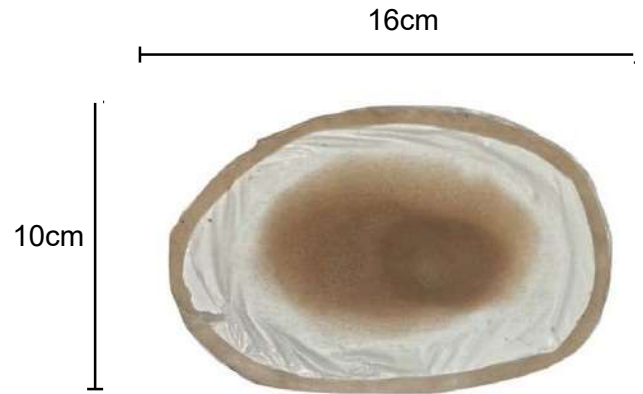


Wound SW15:
3 inch open fracture with bone fragments





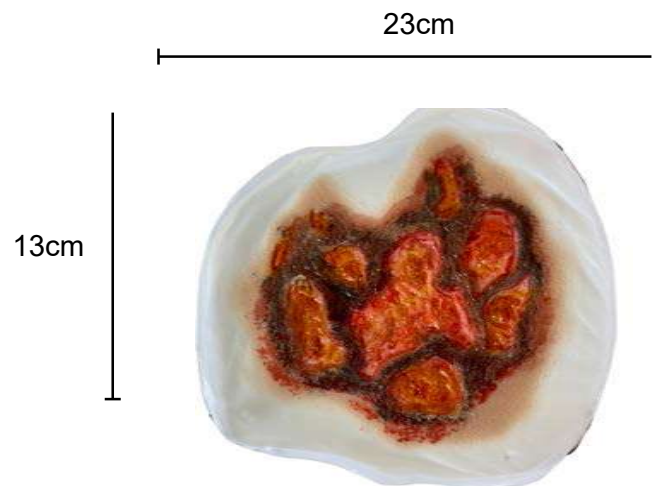
Wound SW16:
Closed fracture



Burns



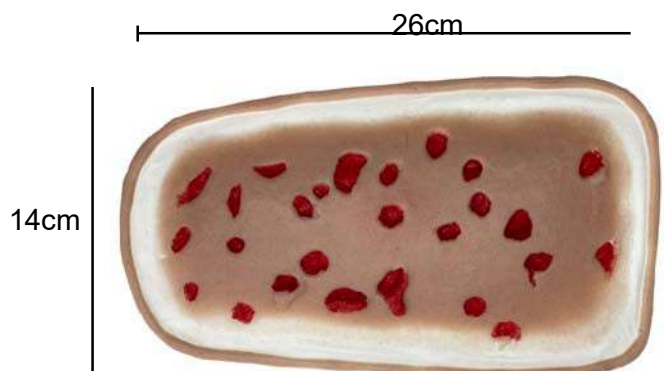
Wound SW17:
Full thickness burn / blast wound



Gun shot and blast wounds

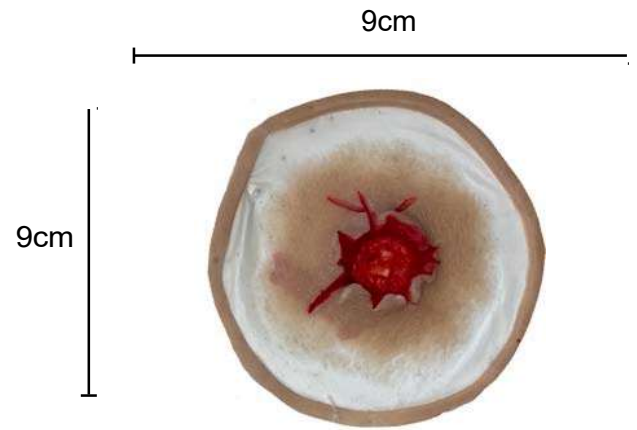


Wound SW18:
Limb shrapnel injuries
Actively bleeds with addition of blood line

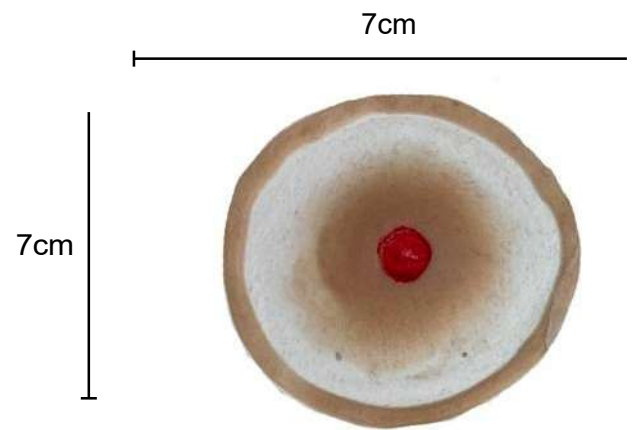




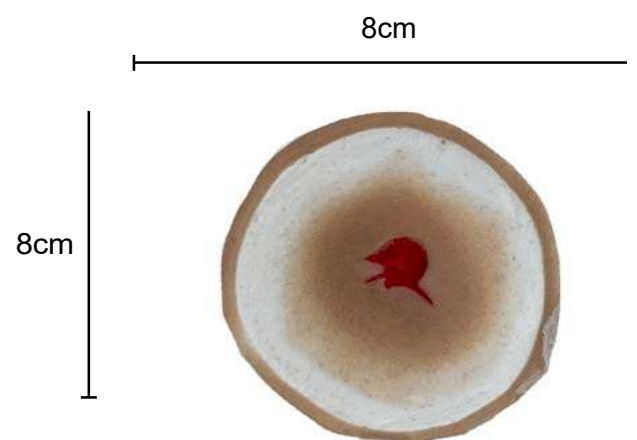
Wound SW19:
Raised exit wound



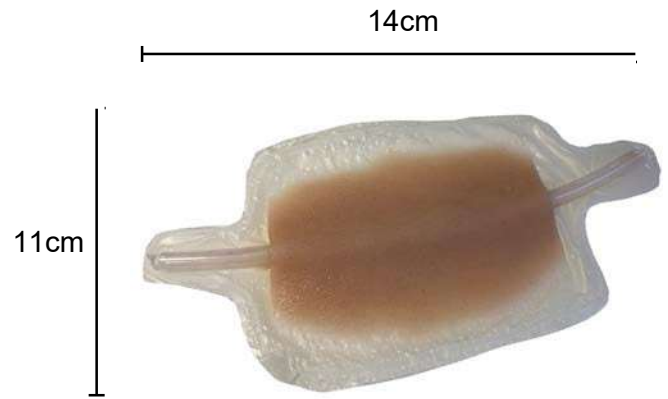
Wound SW20:
Clean small calibre entry wound



Wound SW21:
Clean small calibre exit wound



IV Trainer Patch



Wound SW22:

IV trainer Patch

Can be fitted to any part of the manikin and allows for accurate venepuncture training. Supplied with Leur locks at both ends.